

The logo for TMC Transformers is centered on a white background. It features the letters 'TMC' in a large, bold, blue, sans-serif font. Below 'TMC', the word 'TRANSFORMERS' is written in a smaller, bold, blue, sans-serif font. The entire logo is framed by two vertical red lines, one on the left and one on the right.

TMC
TRANSFORMERS

HISTORY

Transformers Manufacturing Company Pty Ltd, established in **1937** in Melbourne (Australia), is recognized as a leading manufacturer of static induction equipment.



TMC
TRANSFORMERS
AUSTRALIA

TMC
TRANSFORMERS

HISTORY

Transformers Manufacturing Company España S.A. was founded in 2003 as a commercial company to attend the Iberian market. The first production plant was opened in 2004 in Lemoa, near Bilbao.



Fabrica de Lemoa.

As a consequence of the industrial development, **TMC España** invested in a **9,000 m²** plant in Artea, opening in 2010 with a production capacity for more than 2,500 transformers per year.



HISTORY



TMC España S.A. has been able to service the market's demands, offering to our clients a solution for each project.

Our international market has increased and the direct export is more than 40% of the product .



PLANT

TMC España S.A. has the latest technology for the manufacture of all types of cast resin transformers.



SERVICES

TMC España, S.A. has two test facilities to attend the productive needs, as well as our clients' requirements.

Our Laboratory is equipped with the latest devices and machinery in order to make the routine tests according to the standard, as well as the type and special tests.

- Heating
- Impulse
- Noise
- Patial Discharge
- Others



PRODUCTS



Distribution Cast Resin Transformers

Manufactured according to UNE EN 50541-1.

Standard Product

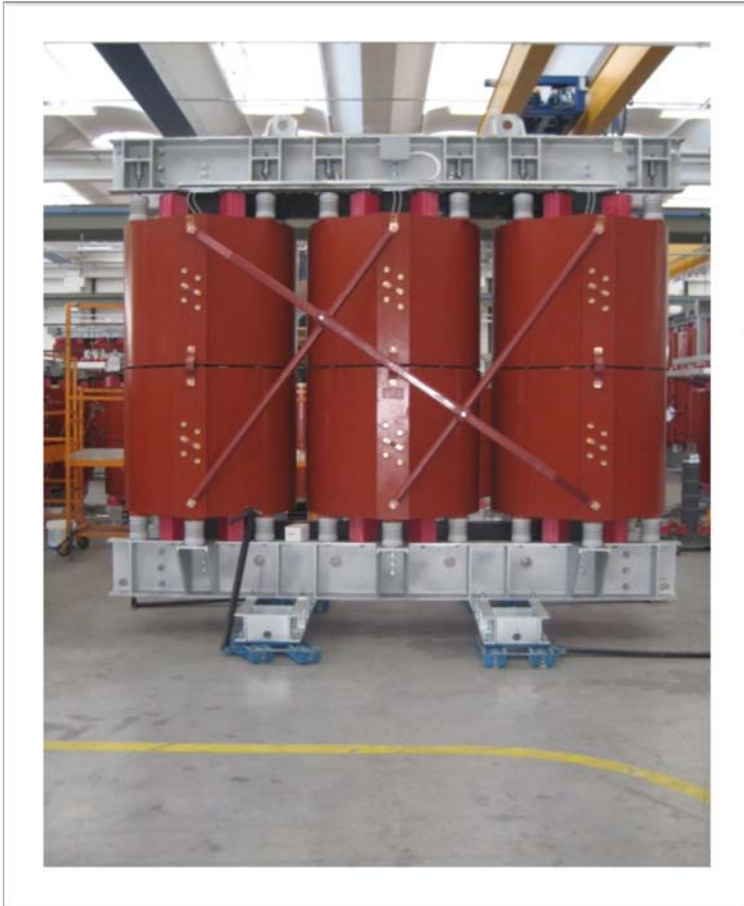
Nominal rated power from 160 to 3150 kVA, with insulation level to 36 kV

TECHNICAL DATA

Nominal rated Power	160 ÷ 3150 kVA
Off load tapping links	±2,5±5 %
Low voltage	400-410-415-420-433 V
Frequency	50 Hz
Vector group	Dyn11 or Dyn5
Type of cooling	AN
Insulation Temperature class	F
Windings material	Al/Al
Installation altitude	≤ 1000 m.a.s.l.

PRODUCTS

SPECIAL TRANSFORMERS



⚠ Motors Power

TRANSFORMER 12,5MVA 25/6 KV

TMC
TRANSFORMERS

PRODUCTS

SPECIAL TRANSFORMERS



 Traction:

Rectifiers from 6÷24 pulse and higher, according to UNE-EN 50329 (2004) (special overload conditions)

TRANSFORMER 2.250KVA 30/1,303-1,303 KV

PRODUCTS

SPECIAL TRANSFORMERS



⚠ Other applications:

Cogeneration,
offshore platforms,
marine applications, ...

TRANSFORMER 9MVA 6/20KV

TMC
TRANSFORMERS

PRODUCTS



Client: MSC-Port of Valencia

TRANSFORMER 16 MVA 20/11 KV

SPECIAL TRANSFORMERS



PRODUCTS

SPECIAL TRANSFORMERS



⚠ On-load tap changer

**TRANSFORMER 20MVA
33/11KV with on-load tap
changer**

Client: SCHNEIDER ELECTRIC

TMC
TRANSFORMERS

PRODUCTS



TRANSFORMER 4 MVA 11,4/2x 0,765 KV

SPECIAL TRANSFORMERS

 Transformers rectifier

PRODUCTS



TRANSFORMER 4 MVA 21/6,3 KV

SPECIAL TRANSFORMERS

PRODUCTS

SPECIAL TRANSFORMERS



TRANSFORMER 2500 kVA (52) 44/0,4 KV

Why dry transformers



CHARACTERISTICS	OIL	DRY	CAST RESIN
Inflammability	YES	NO	NO
Self extinguishing in case of electrical damage	NO	YES	YES
Need for anti-fire structures such as oil grooves and fireproof wall.	YES	NO	NO
Hygroscopicity of insulating materials	NO	YES	NO
Contribution to environmental pollution	YES	NO	NO
Winding resistance and short circuit	NO	NO	YES
Resistance stability for short circuit phenomena	NO	NO	YES
Energizing special procedures	NO	YES	NO
Maintenance	YES	YES	NO
Risk of environmental pollution due to liquid loss	YES	NO	NO
Insensitivity to moisture, salt air and tropical environments	YES	NO	YES
Reducing costs by location upcoming consumer loads	NO	NO	YES
Reliability maintenance and installation without special measures	NO	NO	YES
Maintenance thanks to a low density and high thermal factor.	NO	NO	YES

QUALITY COMMITMENT



ISO 9001:2008

‘Quality’ is not only the certification

‘Quality’ is the way of thinking and doing which we are committed with

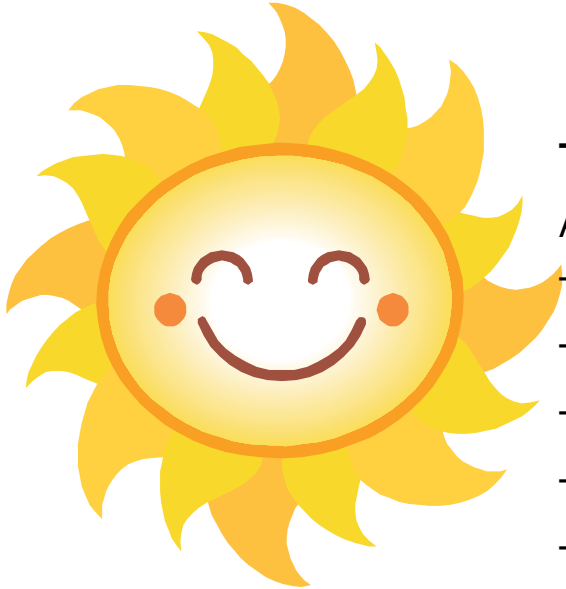
TMC Australia TPY
TMC España SA

certified with ISO 9001:2008
certified with ISO 9001:2008

TMC
TRANSFORMERS

REFERENCES

RENEWABLE ENERGY



THERMOSOLAR:

ARTEXOL Plan

Ciudad Real

Thermoelectric Solar Plant ASTE-1°

Ciudad Real

Thermoelectric Solar Plant ASTE-1A

Ciudad Real

TERMOSOL 1

Badajoz

TERMOSOL 2

Badajoz

Thermosolar Plant HELIOS I

Ciudad Real

Thermosolar Plant HELIOS II

Ciudad real

Thermosolar Plant LA AFRICANA

Córdoba

Thermal-Biomass Hybrid les BORGES BLANQUES

Lleida

Solafrica BOKPOORT

Southafrica

OUARZATE Thermosolar Power Plant

Morocco

REFERENCES

RENEWABLE ENERGY



TMC
TRANSFORMERS

REFERENCES



RENEWABLE ENERGY

EOLIC:

Wind Farm Coruxeiras

Lugo

Wind Farm Fiouco

Lugo

Wind Farm Badaia

Alava

Wind Farm Pebema

León

Wind Farm Los Almendros I

Murcia

Wind Farm Pehimo

Zamora

Wind Farm Los Collados

Castilla y León

Wind Farm Fuente Salada

Castilla y León

Wind Farm Ramacca

Italy

Wind Farm Lucito E Melissa

Italy

Wind Farm Faro Farelo

Pontevedra

REFERENCES



WIND FARMS



REFERENCES

•**PSFV ROVIGO (ITALY)**
70 MW installed
SUN EDISON (276 € million)

•**PSFV CAMPANIA (ITALY)**
20 MW installed
SUN EDISON (91 € million)
52 x 1.000kVA 20KV/300V
42 x 1.000KVA 20KV/275V
2 x 160KVA 20KV/400V

•**SEVERAL PSFV (ITALY)**
5 x 1.000KVA 20KV/275V
4 x 630KVA 20KV/275V

•**PSFV MONTEALTO DI CASTRO (ITALY)**
7 MW installed
6 x 1.250kVA 20kV/330V
2 x 1.000kVA 20KV/330V

•**PSFV SEAT (MARTORELL)**
11 MW sobre cubierta

•**PSFV BELPOWER MONTE RUGA,
PUGLIA SALICE TALENTINO-LECCÉ
(ITALY)**
10 x 1.250kVA 20kV/220-220V
1 x 630kVA 20kV/220V

•**FIRA DE BARCELONA**
2 x 630KVA 25KV/275V

•**PSFV ALGINET (VALENCIA)**
5 x 630kVA 21kV/260V

•**TECNOTRANS BONFIGLIOLI**
28 x 1250kVA 20kV/330V
1 x 630kVA 20KV/315V

RENEWABLE ENERGY

•**PSFV OTANA IN SARDINIA FOR GES
(ITALY)**

7x 1000kVA 15kV/328-328V
1 x 630kVA 15kV/328V

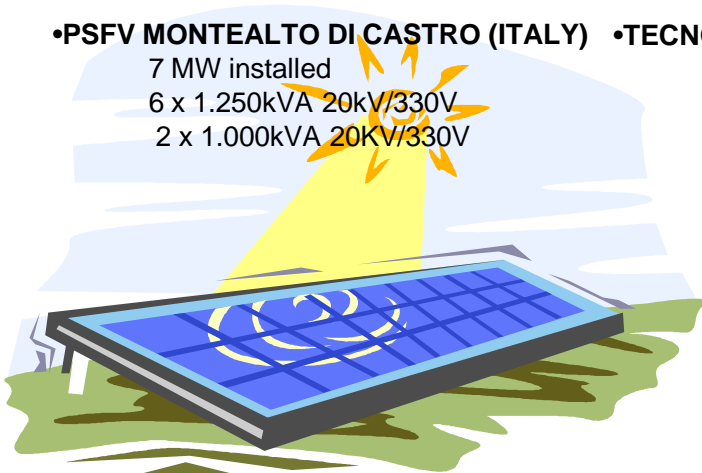
•**SFV VENTURE I (ITALY)**
6 x 1000kVA 15kV/328-328V

•**PSFV FRANCAVILLA (ITALY)**
8 x 1000kVA 20kV/328-328V
1 x 160kVA 20kV/400V

•**PSFV REGION AREQUIPA (PERU)**
32 x 1400 kVA 23/2x0,3kV

•**PSFV ROYALLA (AUSTRALIA)**
10 x 2000 kVA 11/0,4kV

•**PSFV SISHEN (SOUTHAFRICA)**
10 x 2000 kVA 33/0,4kV



REFERENCES

RENEWABLE ENERGY



• PSFV de ROVIGO (ITALIA)

70MW instalados

REFERENCES

Hospital General Isla de Hierro
Hospital Son Dureta
Hospital Santa Cateriana-SALT
Hospital Maternity
Hospital de Merida
Hospital Clínico
Hospital Gomez Ulla
Hospital Infanta Cristina
Hospital de Ocaña
Hospital Universitario Cental de Asturias "HUCA"
Hospital de Valdemoro
Hospital Universitario 12 Octubre
Hospital San Juan de Dios
Policlínica San Sebastián
Hospital de Basurto "OSAKIDETZA"
Centro de Salud de Olmeda
Hospital Universitario Puerto de Hierro
Clínica Quirón

HOSPITALS

Canary Islands
Palma de Mallorca
Girona
Barcelona
Badajoz
Barcelona
Madrid
Badajoz
Toledo
Oviedo
Madrid
Madrid
Burgos
Basque Country
Basque Country
Valladolid
Majadahonda
Barcelona

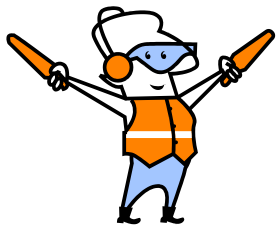


REFERENCES

AIRPORTS

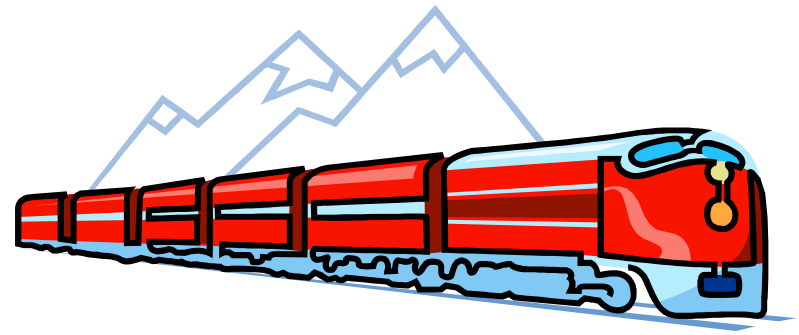
ARLANDA
PALMA DE MALLORCA
BILBAO
SANTIAGO DE COMPOSTELA
REUS
ALBACETE
MALPENSA
MALAGA
NEWPORT IRLANDA
LANZAROTE
ALICANTE
LERIDA
LA PALMA
GIRONA
PRAT
ISLA DE LA PALMA
ALVEDRO
TERUEL

Sweden
Palma de Mallorca
Bilbao
Galicia
Barcelona
Albacete
Italia
Málaga
Ireland
Lanzarote
Alicante
Lérida
La Palma
Girona
Barcelona
Gran Canarias
Coruña
Catalunya



REFERENCES

RAILWAYS



Cable railway in a Sky Resort
Subway Palma de Mallorca
RENFE Atocha Station-“Túnel de la Risa”
Túnel Abdalajiz, línea AVE Córdoba-Málaga
AVE Fuencarral Station
AVE Burgos Station
Túnel de Euskotren en Durago
Mallabia Euskotren Station
Tunnel and station Euskotren in Lebario
RENFE tunnel in Malaga airport
RENFE Station Puerta del Sol
AVE Orense-Santiago
AVE Madrid-Valencia
Train Station Porta Nuova Garibalde en Milan
TGV Lonnays
Hamburger Unterwerk Überseequartier
Energy Recovery System - HESOP
Tranvía de Constantinopla

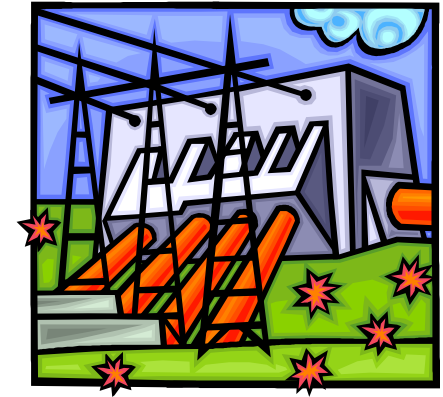
Aragón
Palma de Mallorca
Madrid
Málaga
Barcelona
Burgos
Basque Country
Basque Country
Basque Country
Málaga
Madrid
Galicia
Madrid
Italy
France
Germany
France
Algeria

REFERENCES

POWER GENERATION

Biocompost Plant
Nuclear Ceramics Plant
Arcilla Blanca, S.A. Plant
Planta Atomizadora L´Alcora “Amizalsa”
Cogeneration Plant in Botarell (Tarragona)-Mina De Aguas Teñidas
Hydraulic Plant La Merca
Hydraulic Plant Castro Candelas
Hydraulic Plant El Boñar
Hydraulic Plant La Muela
Kakhovka Power Plant
Dniester Power Plant
Kyiv Power Plant
Hydroelectric Power Plant
Del Bocco Hydroelectric Power
La Fortesa Substation
Baqueira Substation
Cervello Substation
Motors, Penedés and Subirats Substations
Susanna Substation

Jundiz-Vitoria
Villafames-Castellon
L´Alcora-Castellon
L´Alcora-Castellon
Huelva
Albacete
Orense
León
Valencia
Ukraine
Ukraine
Ukraine
Italy
Italy
Catalunya
Lleida
Catalunya
Catalunya
Catalunya



REFERENCES



INFRASTRUCTURE



Soterramiento M30, Tramo III Puente De Praga-Puente De San Isidro
Idam Melilla (South of Spain)

Idam Campo de Cartagena (Murcia)

Planta De Residuos Urbanos Las Marinas

Complejo Hotelero Marina D'Or (Oropesa Del Mar-Castellón)

Complejo Deportivo Aranjuez (Madrid)

Ciudad Del Basket De Badalona (Barcelona)

Ciudad Deportiva Baskonia (Vitoria)

Centro De Ocio Caja Magica Y Tenis Indoor (Madrid)

Rocodromo Casa De Campo (Madrid)

Pabellón De Cristal Casa De Campo (Madrid)

Balenciaga Museum (Getaria - Gipuzkoa)

Complejo Hotelero Balneario De Panticosa (Huesca)

Parque Empresarial Vivero Empresas (Guadalajara)

Palacio De Hielo De Jaca (Huesca)

Gasificadora De Algeciras (Cádiz)

Canal De Segarra Garrigues (Lleida)

Planta Potabilizadora De Abrera (Barcelona)

Ampliación EDAR San Feliú De Llobregat (Barcelona)

Palacio De Congresos ExpoAgua 2008 (Zaragoza)

Tesorería De La S.S. De Jaén

Circuito De Fórmula 1 (Valencia)

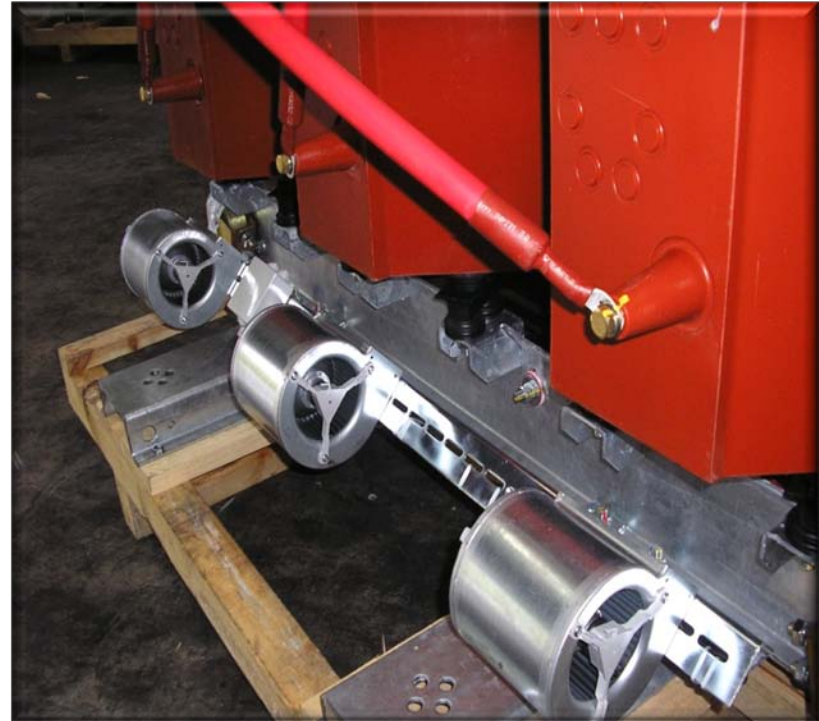
Observatorio Astrofísico (La Palma-Canarias)

ACCESSORIES



BUSHINGS for the connection with insulated separable connectors. Recommended until 24kV-250 Amp.

ACCESSORIES



VENTILATION KIT

2 sidebars with, 6 fans and a VRT-200 relay

ACCESSORIES



METALLIC ENCLOSURES

We make metallic enclosures for indoor or outdoor
with IP 23, 31 or 43 (outdoor)